

WOOD



---

# Contents

About us .....	2
Choosing a coffin .....	3
Our range and suppliers .....	3
Wood .....	4-6
Enhanced and luxury lining .....	7
Somerset willow .....	8-10
Seagrass .....	11
Woollen .....	12
Cardboard effect .....	13
Contemporary .....	14-15
Hinged caskets .....	16
Basic coffin .....	17
Ashes urns and caskets .....	18
Scatter tubes .....	19

---

# About us

We are an independent funeral directors with branches across Berkshire and South Oxfordshire. Founded in 1826, we are one of the oldest family businesses in Berkshire and remain family owned and operated today. We are proud of our heritage and use the experience and knowledge this has given us to serve you and our local community.

Our compassionate and professional team are there to help you with all aspects related to a funeral. From pre-planning, to arranging the funeral itself, to bereavement aftercare and even monumental masonry and memorialisation, we offer choice and flexibility so we can deliver the right options for you. We are committed to providing high standards of service, showing care and respect in all we do.

Recognising that needs change, we believe it's important to innovate. In 2010 we created MemoryGiving.com to allow families and friends to make in-memory donations and leave messages online. To date we have helped collect over £14m for charities, and enabled charities to receive a further £2.5m through Gift Aid as well as connect donor messages of support to nearly 80,000 bereaved families.

Continuing to look forward we are committed to being carbon neutral by 2026, our 200th business anniversary. As a generation that considers themselves custodians of both a business and a planet, we wish to lead efforts to deliver funeral services that are environmentally sustainable, and we now measure the impact of all that we do. Current investments include the introduction of electric cars and use of solar energy.

---

## Choosing a coffin

Today there are many different types of coffin to choose from. They are made from a variety of materials including wood, cardboard, and natural fibres, and in a range of styles from simple to elaborate, traditional to modern, standard to bespoke.

When making your choice of a coffin, you may want to consider:

- Personality and tastes of your loved one
- Materials used to make the coffin
- How environmentally friendly it is
- Style of the coffin
- Cost
- Any specific requirements or restrictions.

Coffin requirements and restrictions can vary for cremation, burial, green/ natural burial and there are very specific requirements in cases of repatriation and for burial at sea.

Our team will take you through the options available, providing you with the details and explaining any requirements or restrictions so that you can make the right choice for your loved one.

## Our range and suppliers

Most of our coffins are made by British family businesses. Together, we are committed to providing you with a choice of high quality products using the highest standards of craftsmanship whilst being considerate to our environment. We use renewable and sustainable materials and avoid the use of wood preparations and finishes that are harmful to the environment.

Our traditional veneer and solid wood coffins are made in Suffolk, our willow and seagrass coffins come from Somerset and our wool coffins from Yorkshire. We also offer coffins using enViroboard, which utilises materials made from sustainably sourced wood fibre and are manufactured in Gloucester; and contemporary designed coffins made in Oxford from sustainably sourced mdf. And for those that would like a more elaborate coffin, we can offer hinged caskets.

In addition to coffins, we offer ashes caskets, urns and scatter tubes, following the same principles and in many cases available to match the coffin.

The decision on choice of coffin is a personal one, and whilst we have included a wide range of options in this brochure, we understand that you may require something different to the ones shown. Talk to your funeral arranger and we will do our best to meet your request.

---

# Wood

Available in veneer or solid wood, our hand crafted wood coffins come with a natural material lining, an engraved name plate on the lid and the option to add a religious or non-religious symbol. We also offer an enhanced and a luxury lining option – see page 7.

Our wood coffins are suitable for cremation and burial.

## Veneer



Oxford Oak –  
high quality Oak veneer



Durham Mahogany –  
high quality Sapele veneer



Chiltern Knotty Oak – high quality Knotty Oak veneer with a  
matt honey stain finish and trimmed with wooden handles  
and wreath holders



Natural material coffin lining

---

## Panelled veneer



Exeter Oak –  
high quality Oak veneer  
with routed panels and a raised lid



Salisbury Mahogany –  
high quality Sapele veneer  
with routed panels and a raised lid

## Symbols

A choice of religious or non-religious symbols can be added to the coffin.



Catholic Fittings



Hindu Om



Sikh Khanda



Masonic Symbol



T-end

---

## Solid wood



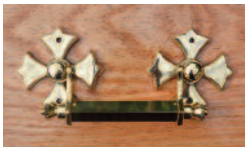
Westminster Solid Oak –  
high quality solid Oak with  
routed panels and a raised lid



Hereford Solid Mahogany –  
high quality solid Mahogany with  
routed panels and a raised lid

## Brass handles

There is the option to  
add brass handles to  
our wooden coffins.



## Ashes caskets

Solid wood ashes caskets are also available in oak and mahogany.  
Each casket is fitted with tear pendent handles.



Solid oak casket  
(double casket shown)



Mahogany casket



Knotty oak casket



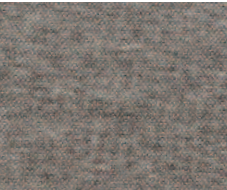
# Enhanced and luxury lining

With our wood coffins you have the option to upgrade from our standard lining to Italian cloth or luxury Harris Tweed lining.

## Italian Garda

Soft material, woven from Italian cloth just outside Milan at the foothills of the Italian alps.

The set consists of an interior and exterior lining, plus an elasticated ruched frill which sits over the coffin lip, and a matching pillowcase.



Grey



Fawn



Blue

## Harris Tweed

Luxury fabric woven out of pure virgin wools from islands across the Outer Hebrides, handmade to order.

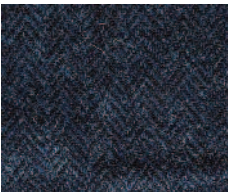
The 100% wool set consists of ruched coffin lip covering, a deep interior, and an exterior frill with a matching deep pillow.



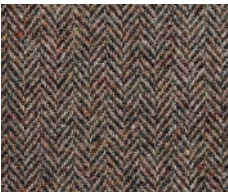
Harris



Bara



Uist



Lewis

---

# Somerset willow

Also known as wicker coffins, willow coffins provide a natural alternative to more traditional options. The willow for our coffins is grown on the Somerset levels and the coffins are hand woven.

They can be personalised through natural, hand-dyed colour bands of woven willow and handles in complementary colours. The interiors are made from natural calico cotton and includes a cotton lining, pillow and a cover sheet. Nameplates are engraved solid oak plaques and can be inscribed with up to five lines of text.

They are completely biodegradable and are suitable for green burial as well as cremation and burial.

Matching ashes caskets are available.



Curve ended in buff



Traditional shape  
in weatherbeaten gold

- Shapes: traditional and curved ended
- Colours: buff and weatherbeaten gold
- Woven willow bands: 13 colours
- Handles: natural willow, rope or woven



Cotton coffin lining

The look and finishes may vary slightly from the pictures shown, this is part of the natural product.

## Colour bands and handles



Colour band and handle options



Traditional shape in buff with colour bands and handles



Curve ended in weatherbeaten gold with colour bands and handles



Optional cross



### Matching ashes caskets

- Rectangular, round and square
- Buff and weatherbeaten gold
- Can include colour bands

The look and finishes may vary slightly from the pictures shown, this is part of the natural product.



---

## Rainbow coloured



Curve ended



Traditional shape



### Matching ashes caskets

- Rectangular, round and square

The look and finishes may vary slightly from the pictures shown, this is part of the natural product.

---

# Seagrass

Our seagrass coffins are hand woven, using yarns of twisted seagrass and have subtle green and blue tones. The seagrass is grown in coastal paddy fields managed to promote a continued cycle of growth and renewability. They come with natural rope handles and are fitted with a natural lining, pillow and covers.

They are suitable for burial, green burial and cremation.

Matching ashes caskets are available.



Seagrass curve ended



Natural lining



Matching ashes caskets



The look and finishes may vary slightly from the pictures shown, this is part of the natural product.

# Woollen

Another natural alternative to traditional coffins is our woollen coffin, made in Yorkshire using pure wool. These coffins are hand woven and come in a softer, oval shape. They have a strong recycled cardboard frame, lined with organic cotton and edged with jute.

Suitable for burial, green burial and cremation.

Matching ashes caskets are available.



Natural

Natural  
ashes casket



Limestone

Limestone  
ashes casket



## Stitch colour

For the natural coffin and ashes casket, there are three stitch options.



Natural



Heather



Sage

The limestone coffin and ashes casket uses Natural stitch.



Cotton coffin lining

---

## Cardboard effect

These cardboard effect, enViroboard coffins are manufactured in Gloucester using branches and bark that would otherwise be lost. They use **up to 80% fewer trees** and emit **up to 87% less greenhouse gas emissions** when cremated compared to traditional coffin materials. They come with eco-friendly beech handles and are fully lined.

Suitable for cremation, green burial and burial.

Earth Care – natural

LifeArt  Earthcare Natural



Life's Canvas – white



Available in any solid colour

---

# Contemporary

Coffins don't have to be plain. With our contemporary range, you can choose between a wide range of standard designs or have your own bespoke design applied to the coffin. The coffins are made from sustainably sourced mdf wood and the material that the designs are printed on is biodegradable. As standard they have a white frill lining and a printed inscription on the lid.

Suitable for cremation and burial.

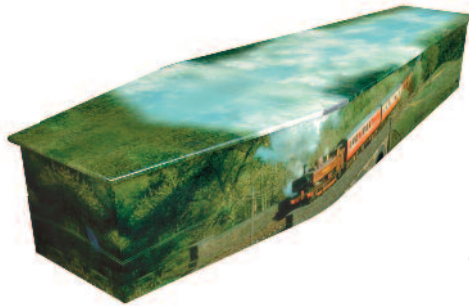
Matching ashes caskets and scatter tubes are available.

## Standard designs

There are a wide range of categories and designs to choose from. Here are just a few examples, further examples can be found on our website.



Summer Days



The Journey



Football Stadium





---

## Bespoke designs

For a truly personalised design, you can choose a bespoke option. One of the most popular choices is a photo collage design using photos you supply. A proof of the design is always provided for approval prior to the coffin being made. Here are just a few examples to give you an idea of what can be done.



Photo collage – example shows 25 photos placed to cover the entire coffin



Single image



Selection of photos over a designed background – example shown Autumn seasons

---

## Hinged caskets

For those that would like a more elaborate coffin, we offer hinged caskets. Available in hardwood or metal, each coffin is quality checked and polished.

These coffins are only suitable for burial, they are not suitable for cremation or green burial. Some cemeteries have restrictions on coffin types, for example Henley Road Cemetery in Reading does not allow metal coffins. Please talk to our team if you are considering this style of coffin.



Hardwood – Manhattan

This solid cherry casket has a deep gloss finish. It has turned wood corners, ivory velvet interior, swing bar handles and an adjustable bed. It also has a memory tube with record insert.



Metal – Platinum Royal

This steel sealing casket has a pearl and platinum finish. It has a white velvet interior, nickel finish swing bar handles, and an adjustable bed. It also has a memory tube with record insert.



---

## Basic coffin

Our basic coffin is part of our Direct Cremation and CMA funeral packages. The CMA funeral package has been designed for those looking for a no frills, attended funeral service solution at a fixed price in place of a bespoke funeral.\*

It is made from chipboard with four handles.

Suitable for cremation and burial.



\*The CMA Funeral Package has several restrictions, please ask for further details if you would like to learn more.

Note: In accordance with the Competitions and Markets Authority (CMA) requirements under their Order 2021, every funeral director is required to display a standardised price list that aims to bring more transparency for consumers when comparing funeral directors. Our CMA funeral package is aligned with that.

# Ashes urns and caskets

We offer a wide range of containers for ashes, for the **full range please visit our website**. When choosing a container you should consider what you intend to do with the ashes longer term in order to pick one that is appropriate to this purpose.

Here are a few simple options that are appropriate for burial. Please note that some cemeteries and churchyards have restrictions on the type of container used.

## Traditional



Bronze effect urn



Solid oak casket  
(double casket shown)



Mahogany casket



Knotty oak casket

## Contemporary

Here are a couple of examples, further examples can be found on our website



Fluttering beauty



Police box (tall)

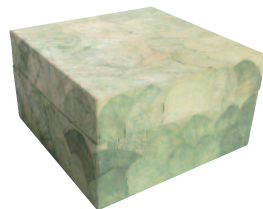
## Leaf urns

Choice of four shapes and colours:

- Heart, Oval, Square, Tall Rectangle
- Red, Green, Slate Blue, Natural



Heart in red



Square in green

---

# Scatter tubes

These are cardboard tubes that offer an alternative to more traditional types of container. They are designed for the safe storage, transportation and eventual scattering of the ashes through a perforated lid. There is a myriad of colours and designs to match coffin designs and can be bespoke.

Here are a few examples, [visit our website for more options](#).



Roses



Dove in flight



Bluebell wood



Ocean sunset



Poppy field



Spring tulips



Flying doves



Bluebells

---



A . B .  
WALKER